

RHOG Antibody (C-term)
Affinity Purified Rabbit Polyclonal Antibody (Pab)
Catalog # AP16200b**Specification**

RHOG Antibody (C-term) - Product Information

Application	WB,E
Primary Accession	P84095
Other Accession	P84096 , NP_001656.2
Reactivity	Human
Predicted	Mouse
Host	Rabbit
Clonality	Polyclonal
Isotype	Rabbit IgG
Calculated MW	21309
Antigen Region	99-128

RHOG Antibody (C-term) - Additional Information**Gene ID** 391**Other Names**

Rho-related GTP-binding protein RhoG, RHOG, ARHG

Target/Specificity

This RHOG antibody is generated from rabbits immunized with a KLH conjugated synthetic peptide between 99-128 amino acids from the C-terminal region of human RHOG.

Dilution

WB~~1:1000

E~~Use at an assay dependent concentration.

Format

Purified polyclonal antibody supplied in PBS with 0.09% (W/V) sodium azide. This antibody is purified through a protein A column, followed by peptide affinity purification.

Storage

Maintain refrigerated at 2-8°C for up to 2 weeks. For long term storage store at -20°C in small aliquots to prevent freeze-thaw cycles.

Precautions

RHOG Antibody (C-term) is for research use only and not for use in diagnostic or therapeutic procedures.

RHOG Antibody (C-term) - Protein Information**Name** RHOG

Synonyms ARHG

Function Plays a role in immunological synaptic F-actin density and architecture organization (PubMed:[33513601](#)). Regulates actin reorganization in lymphocytes, possibly through the modulation of Rac1 activity (PubMed:[33513601](#)). Required for the formation of membrane ruffles during macropinocytosis (PubMed:[15133129](#)). Plays a role in cell migration and is required for the formation of cup-like structures during trans-endothelial migration of leukocytes (PubMed:[17875742](#)). Binds phospholipids in an activation-dependent manner; thereby acting as an anchor for other proteins to the plasma membrane (PM) (PubMed:[33513601](#)). Plays a role in exocytosis of cytotoxic granules (CG) by lymphocytes/Component of the exocytosis machinery in natural killer (NK) and CD8+ T cells (PubMed:[33513601](#)). Promotes the docking of cytotoxic granules (CG) to the plasma membrane through the interaction with UNC13D (PubMed:[33513601](#)). Involved in the cytotoxic activity of lymphocytes/primary CD8+ T cells (PubMed:[33513601](#)).

Cellular Location

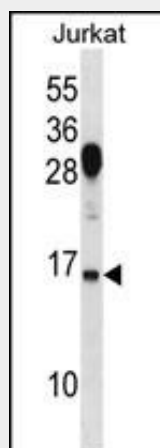
Cell membrane; Lipid-anchor; Cytoplasmic side

RHOG Antibody (C-term) - Protocols

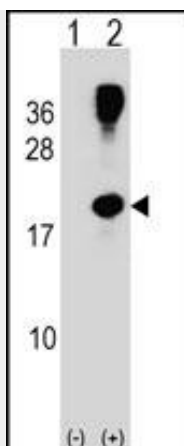
Provided below are standard protocols that you may find useful for product applications.

- [Western Blot](#)
- [Blocking Peptides](#)
- [Dot Blot](#)
- [Immunohistochemistry](#)
- [Immunofluorescence](#)
- [Immunoprecipitation](#)
- [Flow Cytometry](#)
- [Cell Culture](#)

RHOG Antibody (C-term) - Images



RHOG Antibody (C-term) (Cat. #AP16200b) western blot analysis in Jurkat cell line lysates (35ug/lane). This demonstrates the RHOG antibody detected the RHOG protein (arrow).



Western blot analysis of RHOG (arrow) using rabbit polyclonal RHOG Antibody (C-term) (Cat. #AP16200b). 293 cell lysates (2 ug/lane) either nontransfected (Lane 1) or transiently transfected (Lane 2) with the RHOG gene.

RHOG Antibody (C-term) - Background

ARHG is a member of the RAS superfamily of genes, which encode GTP-binding proteins that act in the pathway of signal transduction and play a key role in the regulation of cellular functions.

RHOG Antibody (C-term) - References

Hiramoto-Yamaki, N., et al. J. Cell Biol. 190(3):461-477(2010)
Segat, L., et al. Vaccine 28(10):2201-2206(2010)
Landa, I., et al. PLoS Genet. 5 (9), E1000637 (2009) :
Roppenser, B., et al. J. Cell. Sci. 122 (PT 5), 696-705 (2009) :
van Buul, J.D., et al. J. Cell Biol. 178(7):1279-1293(2007)